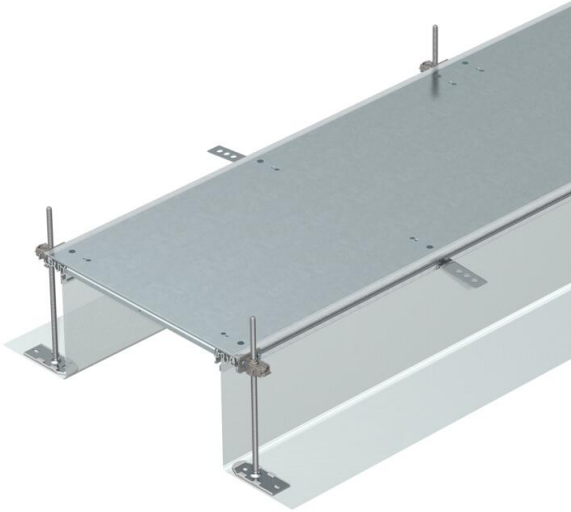


Technical data sheet

Trunking unit, blank, locking, height 40–240

Item number: 7424068



Ready-to-mount trunking unit for cable routing consisting of 3 self-locking blind lids, 2 side profiles with attached flexible side wall made of metal mesh, floor covering contact profiles with a height H of 3 mm. The scope of delivery contains 6 height-adjustable fixing brackets, 6 screed anchors and 3 lid butt seals (for nominal trunking widths 200, 300 and 400) or 6 lid butt supports (for nominal trunking widths 500 and 600). The essential levelling units (observe height adjustment) for the 500 and 600 lid supports are not contained in the scope of delivery and should be ordered separately. The trunking lids are screwed up to and including the nominal width 400, pre-mounted with locking springs.



St Steel

FS Strip galvanized

Master data

Item number	7424068
Type	OKA-G60040240R
Description 1	Flushfloor trunking unit
Description 2	blank, locking
Manufacturer	OBO
Dimension	2400x600x240
Material	Steel
Surface	Strip galvanized
Surface standard	DIN EN 10346
Smallest sales unit	2.4
Unit of quantity	Metre
Weight	2202.9 kg
Weight unit	kg/100 m
CO2 Footprint (GWP) Cradle-to-Gate	83,4687 kg CO2e / 1 Meter

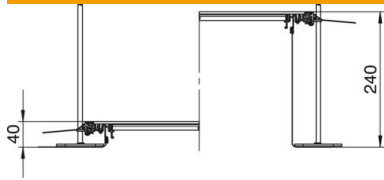
Technical data sheet

Trunking unit, blank, locking, height 40–240

Item number: 7424068



Dimensions



Length	2,400 mm
Width	600 mm

Technical data

Mounting opening cover	no
Covers	3
Mounting system fastening type	Floor
Floor plate	no
Floor care	Wet
Cover fastening, locking	yes
Seal installation option	yes
Installation opening for on-floor tank	no
Decouplable	yes
Suitable for expansion joint	no
Mesh wall	yes
Trunking height, max.	240 mm
Duct height, min.	40 mm
Cover material thickness	4
Minimum screed height	40
With connection opening	no
With equipotential bonding	no
With separating retainer	no
With overhang	yes
Mounting opening	Without
Height-adjustment range, max.	240 mm
Height-adjustment range, min.	40 mm
Removable cover	yes