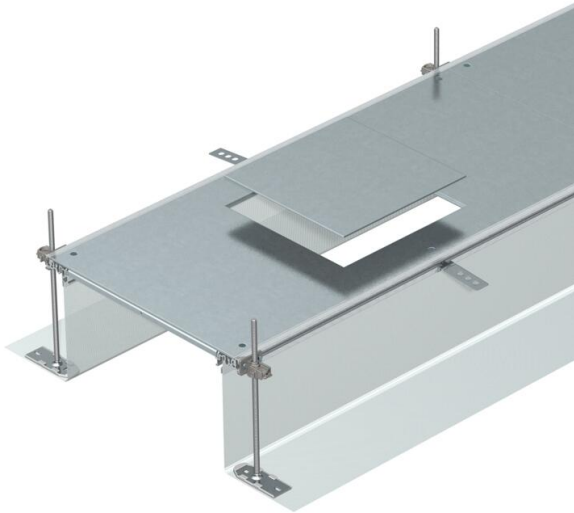


# Technical data sheet

## Trunking unit for GES9, height 40–240 mm

Item number: 7424222



Ready-to-mount screed-flush trunking unit for cable routing, consisting of three system covers, two side profiles with attached flexible side wall made of metallic mesh, floor covering contact profiles with H = 3 mm. For dry interior rooms with dry-care floors. Also suitable for wet-care floors with appropriate system accessories. The scope of delivery contains six height-adjustable fastening brackets, six screed ties and three lid butt seals for nominal trunking widths 200, 300 and 400 or six lid butt supports for trunking widths 500 and 600. The essential leveling units (please observe adjustment height) for the lid butt supports 400, 500 and 600 are not contained in the scope of supply, please order separately. On delivery, the trunking lids are screwed on. With three (for nominal trunking width 400, L = 800 mm) or six device installation lids (for nominal trunking widths 500 and 600, L = 400 mm) each with one installation opening for a square installation unit of nominal size 9.



**St** Steel

**FS** Strip galvanized

### Master data

Item number	7424222
Type	OKA-G50040240D9
Description 1	Flushfloor trunking unit
Description 2	for service unit GES9
Manufacturer	OBO
Dimension	2400x500x240
Material	Steel
Surface	Strip galvanized
Surface standard	DIN EN 10346
Smallest sales unit	2.4
Unit of quantity	Metre
Weight	1681.7 kg
Weight unit	kg/100 m
CO2 Footprint (GWP) Cradle-to-Gate	84,8161 kg CO2e / 1 Meter

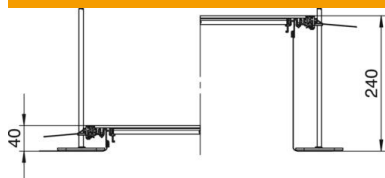
# Technical data sheet

Trunking unit for GES9, height 40–240 mm

Item number: 7424222



## Dimensions



Length	2,400 mm
Width	500 mm

## Technical data

Mounting opening cover	yes
Covers	6
Number of planned flush-mount units	6
Mounting system fastening type	Floor
Floor plate	no
Cover fastening, locking	no
Seal installation option	yes
Installation opening for on-floor tank	no
Decouplable	yes
Suitable for expansion joint	no
Mesh wall	yes
Trunking height, max.	240 mm
Duct height, min.	40 mm
Cover material thickness	4
Minimum screed height	40
With connection opening	no
With equipotential bonding	no
With separating retainer	no
With overhang	yes
Mounting opening	For service outlet
Mounting opening	Square
Nominal size for device installation units	9
Height-adjustment range, max.	240 mm
Height-adjustment range, min.	40 mm
Removable cover	yes