

Technical data sheet

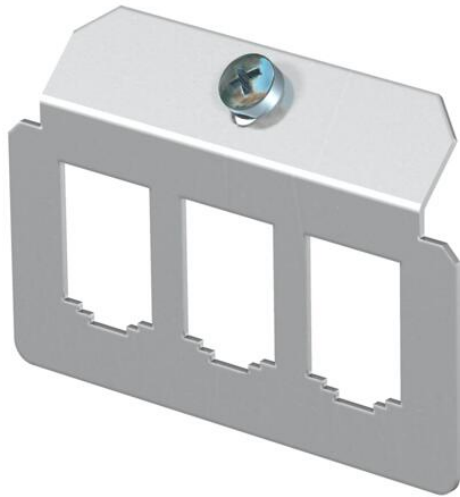
Support plate 3 x type B for mounting support

Item number: 7407824



Support plate to accept three connection sockets for data connection modules of the following types BTR: E-DAT; Dätwyler: MS and MS-N; Kerpen: VarioKeystone.

Dimensions of a mounting opening in mm: 19.35/21.55 x 14.85.

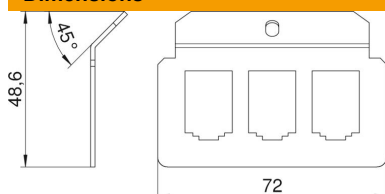


A2 Stainless steel

Master data

Item number	7407824
Type	MTM 3B
Description 1	Support plate
Description 2	with 3x hole pattern Type B
Manufacturer	OBO
Material	Stainless steel 1.4301
Smallest sales unit	1
Unit of quantity	Piece
Weight	2.4 kg
Weight unit	kg/100 pc.
CO2 Footprint (GWP) Cradle-to-Gate	0,1999 kg CO2e / 1 Piece

Dimensions



Length	72 mm
--------	-------

Technical data sheet

Support plate 3 x type B for mounting support

Item number: 7407824



Technical data

Connection options	3 data connection modules of the following types BTR: E-DAT; Dätwyler: MS and MS-N; Kerpen: VarioKeystone
Number of installable devices	3
Number of strain reliefs	0
Version for	Support shape
Fastening type	Lockable
Labelling panel	no
Floor covering protection frame	no
Floor plate	no
Lowerable to be flush-floor	no
Seal installation option	no
Installation opening for on-floor tank	no
Decouplable	no
Suitable for raised floor installation	yes
Suitable for screed-flush closed underfloor ducts	yes
Suitable for screed-covered underfloor ducts	yes
Suitable for cavity floor installation	yes
Suitable for underfloor ducts	yes
With floor covering recess	no
Heavy-duty version	no
Depth	48.6 mm
Strain relief option	yes