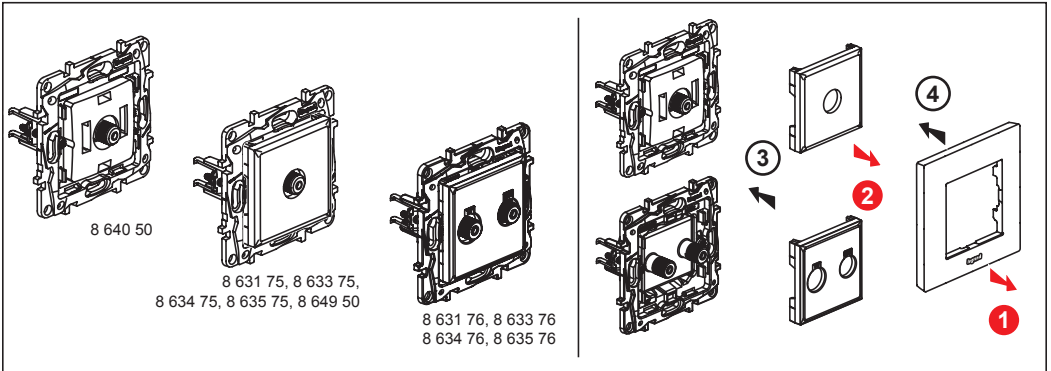

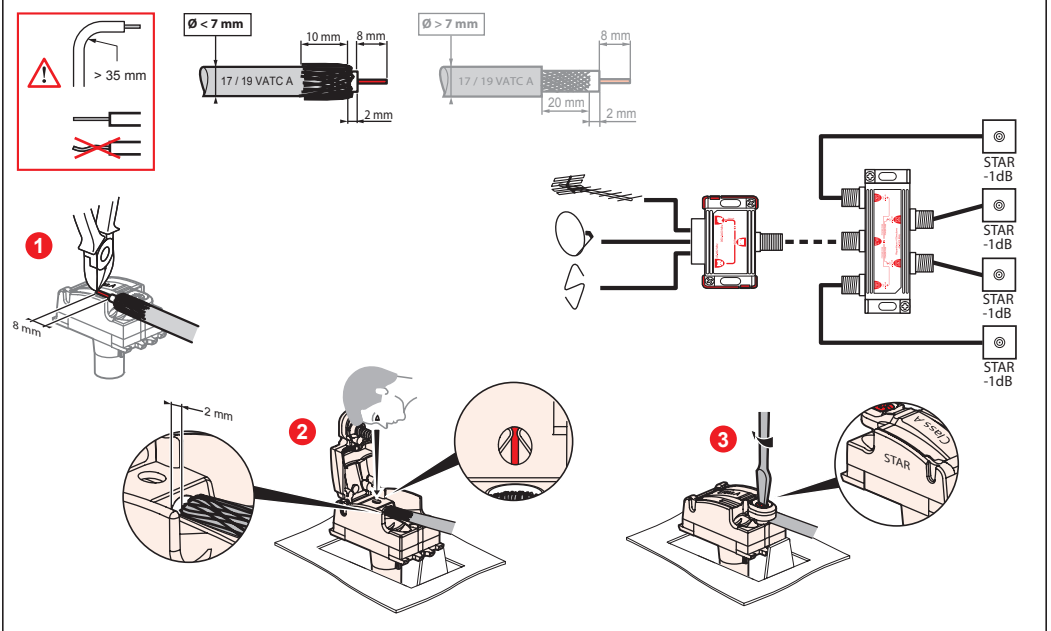


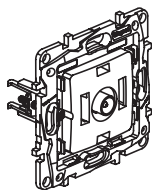
NILOÉ^{STEP}

8 631 72 / 73 / 74 / 75 / 76 / 78 / 79 / 80 / 82 / 83
 8 633 72 / 73 / 74 / 75 / 76 / 78 / 79 / 80 / 82 / 83
 8 634 72 / 73 / 74 / 75 / 76 / 78 / 79 / 80 / 82 / 83
 8 635 72 / 73 / 74 / 75 / 76 / 78 / 79 / 80 / 82 / 83
 8 640 50 / 51 / 52 / 53 / 54 / 55 / 56 / 57 / 58 / 59, 8 649 50 / 51 / 54 / 57

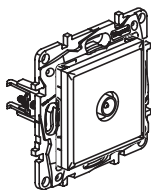


	Control	Return Path	Channel 1	Channel FM	Channel VHF	Channel UHF	Channel SAT (IF)
Z							
75 Ω	22 kHz 0,6 V	4 - 30 MHz	47 - 68 MHz	87,5 - 108 MHz	120 - 470 MHz	470 - 862 MHz	950 - 2400 MHz
8 631 75 / 76, 8 633 75 / 76 8 634 75 / 76, 8 635 75 / 76 8 640 50, 8 649 50	1,5 dB			1,5 dB			2 dB

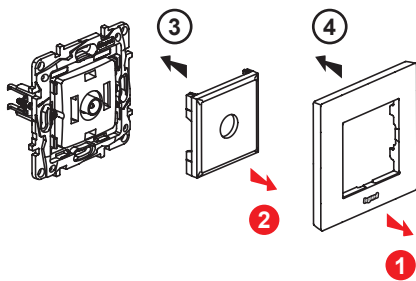





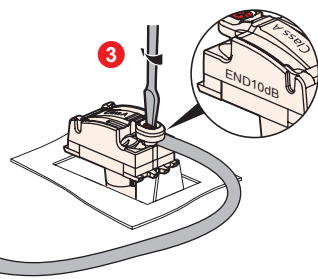
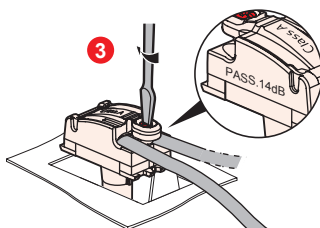
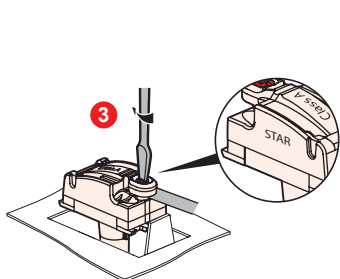
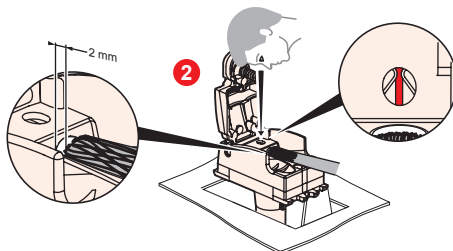
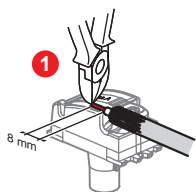
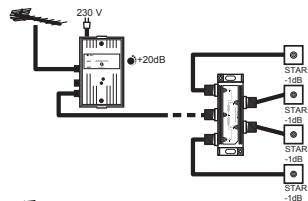
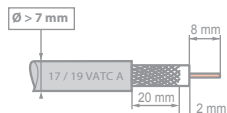
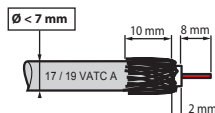
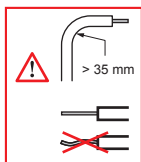
8 640 51 / 52 / 53

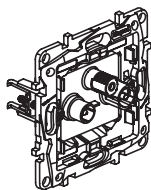


8 631 72 / 73 / 74, 8 633 72 / 73 / 74,
8 634 72 / 73 / 74, 8 635 72 / 73 / 74,
8 649 51

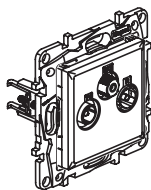


	Control	Return Path	Channel 1	Channel FM	Channel VHF	Channel UHF	Channel SAT (IF)	
Z								
75 Ω	22 kHz 0,6 V	4 - 30 MHz	47 - 68 MHz	87,5 - 108 MHz	120 - 470 MHz	470 - 862 MHz	950 - 2400 MHz	
8 631 74, 8 633 74, 8 634 74 8 635 74, 8 640 51, 8 649 51	1,5 dB	1,5 dB					2 dB	
8 631 72, 8 633 72, 8 634 72 8 635 72, 8 640 52		14 dB						
8 631 73, 8 633 73, 8 634 73 8 635 73, 8 640 53		10 dB						

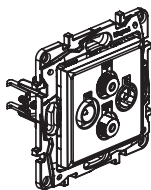




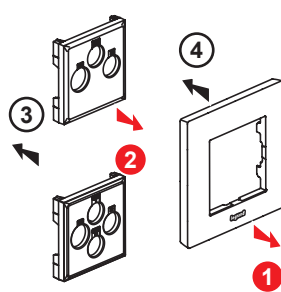
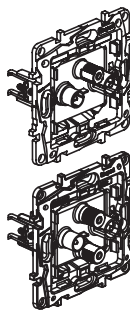
8 640 57 / 58 / 59



8 631 78 / 79 / 80
8 633 78 / 79 / 80
8 634 78 / 79 / 80
8 635 78 / 79 / 80
8 649 57

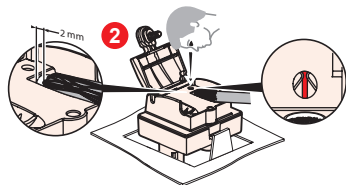
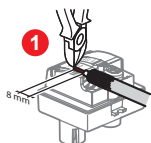
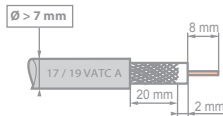
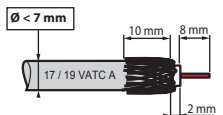
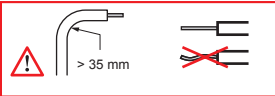


8 631 82, 8 633 82
8 634 82, 8 635 82

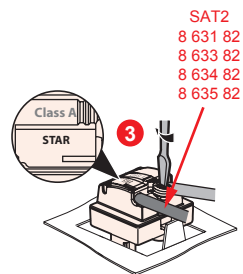
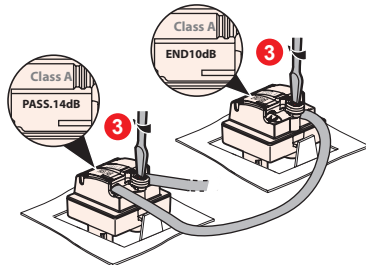


		Control 22 kHz 0,6 V	Return Path 4 - 30 MHz	Channel 1 47 - 68 MHz	Channel FM 87,5 - 108 MHz	Channel VHF 120 - 470 MHz	Channel UHF 470 - 862 MHz	Channel SAT (IF) 950 - 2400 MHz
Z = 75 Ω	500 mA	1,5 dB	1,5 dB				2 dB	
8 631 82, 8 633 82, 8 634 82 8 635 82, 8 649 57			14 dB					
8 631 78, 8 633 78, 8 634 78 8 635 78, 8 640 58			10 dB					
8 631 79, 8 633 79, 8 634 79 8 635 79, 8 640 59								

		Control 22 kHz 0,6 V	Return Path 4 - 30 MHz	Channel 1 47 - 68 MHz	Channel FM 87,5 - 240 MHz	Channel VHF 120 - 470 MHz	Channel UHF 470 - 862 MHz	Channel SAT (IF) 950 - 2400 MHz
Z = 75 Ω	500 mA	1,5 dB	1,5 dB				2 dB	
8 631 80, 8 633 80, 8 634 80 8 635 80, 8 640 57								



TV-R-SAT	8 631 80 8 633 80 8 634 80 8 635 80 8 640 57 8 649 57			
	8 631 78 8 633 78 8 634 78 8 635 78 8 640 58			
TV-R-SAT-SAT	8 631 79 8 633 79 8 634 79 8 635 79 8 640 59			
	8 631 82 8 633 82 8 634 82 8 635 82			



SAT2
8 631 82
8 633 82
8 634 82
8 635 82